

# **SERVING THE MARINE AND OIL INDUSTRY FOR OVER 45 YEARS**

**KEVELS  
DOORS  
HATCHES**

**FAIRLEADS  
CAPSTANS  
WINCHES  
WINDLASSES**

*Detachable Conn. Links  
Kenter Joining Links  
Anchor Joining Links  
Towing Plates*

**PUMPS  
PONTOONS  
BUOYS**

**ANCHORS  
CHAIN  
CONN. LINKS**

*We Are Direct Importers  
and Factory Distributors*

**SHACKLES  
SWIVELS  
PEAR LINKS**

**FENDERS  
CHOCKS  
BITTS**

*Gigantic Inventory  
New & Used  
In Stock Now on the  
West and Gulf Coasts*

**Call Toll-Free  
(800) 322-3131**

**Exclusive Distributors for**



**Products**

*Anchors • Chain • Hardware • Fittings*

**MARINE HDWE.**

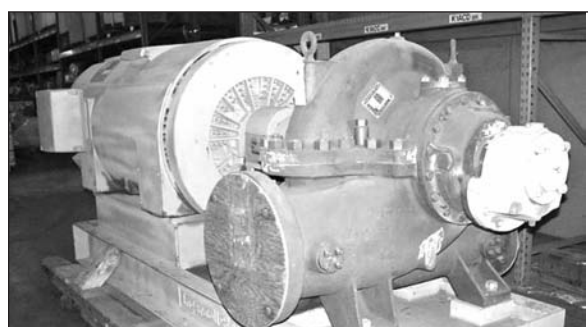
## **28' OIL POLLUTION BOAT WITH TRAILER**



*Manufactured by Willard in 1997. Powered by Volvo diesel, Model AD31L130 with a DPDI dual prop outdrive.*

**Excellent Condition**

## **NEW INGERSOLL RAND BRONZE PUMPS**



**3000 Gallons per minute at 370 Ft. Head (150 P.S.I.)  
1785 RPM - 12" suction 8" discharge  
driven by 500 HP 440 volts 60 cycle motor  
3 complete units available Curves Available**

**MANY OTHER PUMPS IN STOCK**

## **MARINE FENDERS PNEUMATIC AND FOAM FILLED**



**MADE WITH  
PRIDE IN U.S.A.  
1-800-322-3131**

**We are Distributors for NEW Fenders and Buoys  
We also carry a great inventory of used fenders.  
Rentals Available and Fast Deliveries Anywhere  
Very Competitive Prices, Give Us A Call**

910 Mahar St. • Mailing Address: P.O. Box 596  
WILMINGTON, CALIFORNIA 90748

**PH: 310-522-9698 - 800-322-3131 FAX 310-522-1043**  
www.watermansupply.com • E-mail: waterman@bigplanet.com



*Marine & Industrial Equipment*