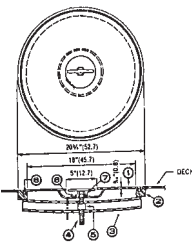


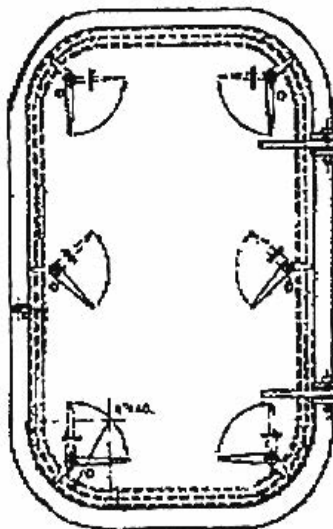
NEW FLUSH HATCHES



PIECE NUMBER	NAME	MATERIAL
1	COVER ASSEMBLY	MILD STEEL
2	DECK RING	MILD STEEL
3	STRONG BACK	MILD STEEL
4	TEE HANDLE	STAINLESS STEEL
5	NUT	BRASS
6	GASKET	NEOPRENE
7	WASHER	BRASS
8	WASHER	NEOPRENE

PRICE ON REQUEST

6-Dog Watertight ABS Steel Doors



1/4" Panel
5/16" Frame
Righthand & Lefthand
Clear Opening Sizes:
26 x 60
30 x 60
30 x 66
30 x 72

Available in either
Manual or Quick-Acting
Operation
(4-Dog doors also
available)
Other sizes available
by special order.



NEW 7" RADIUS PANAMA CHOCKS

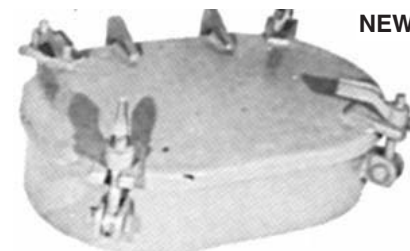
(Meet Panama regulations)
14" x 10" CLEAR OPENING

With extended legs for welding to deck.
14" Wide on base - 28" Length - 27-1/4" High
In Stock Immediate • Delivery

NEW 18" & 24" HATCH COVERS



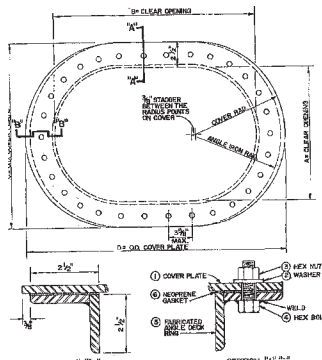
Flush mounting watertight hatch with machined steel mounting ring. T-handle is recessed and hand tightens against a strongback across mounting ring: 18" 90lbs. - 24" 120lbs.



NEW

4-DOG GENERAL PURPOSE 15" x 23" x 5" HATCH

FACTORY NEW - SIZE 15x23 RAISED BOLTED PLATE MAN HOLE OR TANK TOP COVER



1/2" Thick-Cover 3/8" Thick
Coaming
2-1/2" High
Overall dims. of cover
20" x 28-3/4"
Overlap for lifting
No handles necessary

NEW 15" x 23" TANK TOP COVERS

3/8" COVER & 3/4" DECK RING
Complete with Neoprene Gasket w/Brass Washers & S.S.
Nuts 20 Bolts - Wt. 95 lbs.



24"- 36"- 48" KEVEL CHOCKS

ALSO AVAILABLE

Open and Closed
Chocks
Single and Double
Bits
All types of
Marine Equipment

POLI MARITIME

(formerly of Maritime Power Corporation) 79 West 33rd Street, Bayonne, New Jersey 07002

PHONE: (201) 243-6387 • (201) 858-2675 • Fax: (888)491-4731 • Email: claire@polimaritime.com