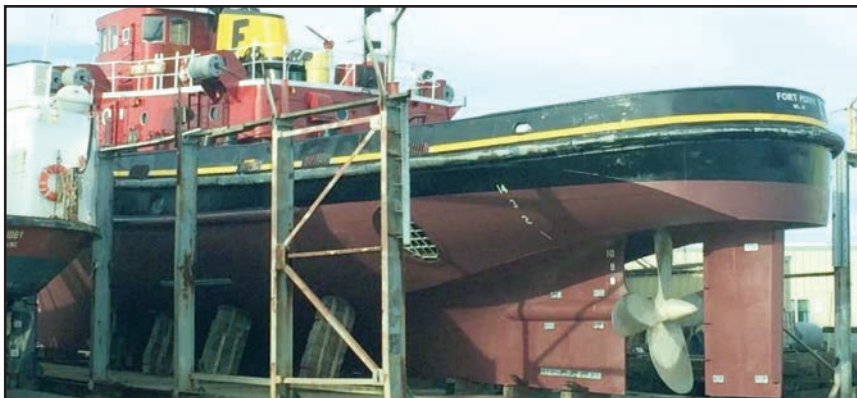


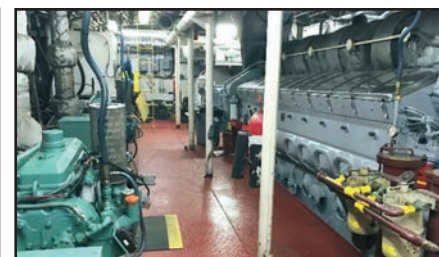
## 2,000 H.P. TUG



Ex Navy YTB 102' x 29' x 14' - 2,000 H.P. Single Screw Tug with 800 H.P. Stern Thruster. Main Engine: Fairbanks Morse 10-38D 8 1/8. SMI 52" tunnel thruster driven by Detroit 12V-92. (2) 6-71 75 KW gen sets. 3,000gpm firefighting system. Last dry dock July 2015.

Excellent Condition Mechanically & Cosmetically.

## 4,000 H.P. COMBI-TUG



100' x 26' x 14' - Main Engine: EMD 20-645-E5. Falk Hydraulic Reduction Gear. Retractable Aquamaster 360 degree Z-drive forward, driven by 800 H.P. Detroit 12V-92. (2) 4-71 60KW gen sets. Fwd & Aft hydraulic capstans. 3,000gpm firefighting system driven by 8V-71.

Excellent Condition Cosmetically & Mechanically.

**Vessels Located in Northeast, Call for Pricing & Additional Information:  
(207) 338-3000**