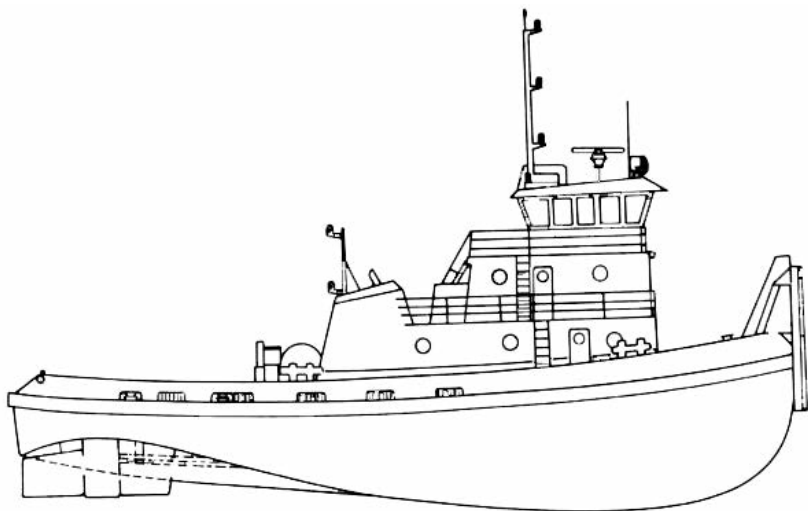
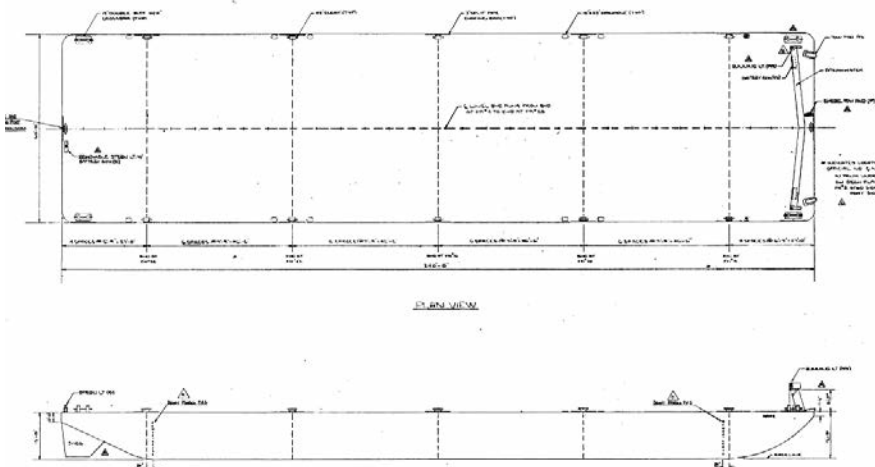


U.S. Flag Tug & Barge For Sale

Direct From Close Owners



File: TG21090 Tug - Twin Screw: 90' x 32' x 11.2' depth x 6' light x 8.5' loaded draft. Built 1982 by Dakota Creek Industries.; Anacortes, WA. U.S. flag. GRT: 147. ABS +A1 Towing Service +AMS exp. Mar 2019. Docking due May 2017. Annual overdue Mar 2016. Laid up in active class. FO: 60,000g. FW: 4,000g. Smatco single drum winch. Wire Capacity: 1,900' x 1.75". Main Engines: 2 x CAT 3512 total 2,110HP. Twin Disc 6.18:1 gears. 4-blade FP props in kort nozzles. Bowthruster. Bollard Pull: 24T. Gensets: 2 - CAT 3304. Steel hull with aluminum house.



File: DB24016 Deck Barge - Ocean: 240.0' x 60.0' beam x 15.0' depth x 11.9' draft. Built 1981 by FMC Marine; Portland, OR. U.S. flag. GRT: 1,856. Class: ABS + A1 Unrestricted Deck Cargo Barge. Laid up in active class. Docking overdue Mar 2016. Special Survey due Apr 2018. Deadweight: 4,300st. Bulkheads: 1 long'l / 5 transv. 27' bow & stern rakes with skegs aft. Breakwater forward. Wooden wear deck.

Call for prices, further technical details and to arrange inspection.

Inspection / Delivery: U.S. West Coast. Prompt.

Marcon International, Inc.

Tel: 360-678-8880 e-mail: info@marcon.com Fax: 360-678-8890

www.marcon.com