

WORK BOAT SHOW SPECIALS!

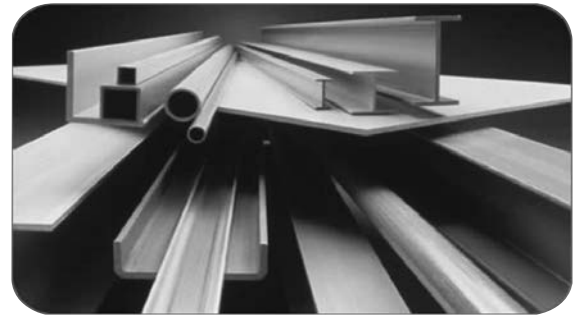
Prices Good Through Dec. 31st, 2012

Extren® Fiberglass Structural Shapes and Plates

STRONGWELL Get the wood out!

A combination of fiberglass reinforcements and thermosetting polyester or vinyl ester resins systems. Lightweight, UV and corrosion-resistant, non-magnetic. High strength and low maintenance. Available in more than 100 shapes.

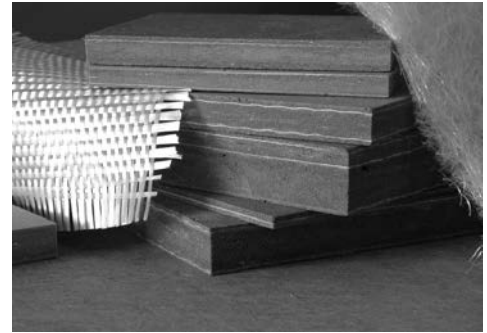
Corrosion-resistant • Low conductivity - thermally and electrically
• Non-magnetic - electromagnetic transparency • Lightweight • High strength • Dimensional stability • Low maintenance



Coosa Composite Building Panels Use in place of plywood!

Structural panels made of high-density, polyurethane foam, reinforced with layers of fiberglass. The no-rot and lightweight advantages of foam combined with the structural properties make Coosa panels an excellent replacement material for wood and other traditional core materials. Used throughout the marine, industrial and transportation industries in structural and non-structural applications.

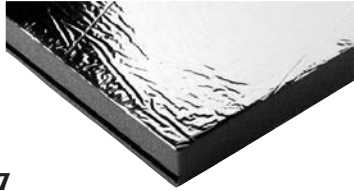
Nautical 15 Highly economical, super-lightweight, 61% lighter than plywood
Bluewater 20 Semi-structural component, superior strength, 45% lighter than plywood
Bluewater 26 The strongest, stiffest panel. Ultimate high strength-to-weight ratio. 30% lighter than plywood.



Noise Control

1" Thick Sound Absorber Sheet

\$54⁸³ Reg 71.99
Order# 154807



1" Thick Sound Barrier Composite Sheet

\$56⁶² List 82.99
Order# 154810

32" x 54" sheets with reinforced metalized polyester film facing and adhesive backing.

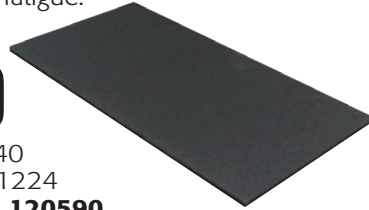
Bridge Plank

1/2" Thick, 12" x 24"

Rubberized asphalt tiles protect deck & lessen fatigue.

\$10

List 13.40
JMP-121224
Order# 120590

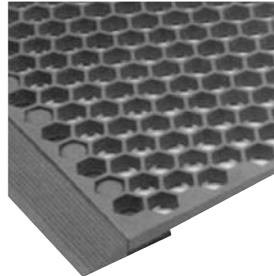


Heavy Duty Anti-Fatigue Tek Tough Mats

7/8" Thick, 3' x 5'

Non-tracking formulation, excellent drainage, wear resistant, provides outstanding comfort.

Reg 87.99 **\$80⁰⁵**
TKA-435001
Order# 134696



316 Stainless Steel Hollow Back

Available in lengths of 6', 8', 12', 16' and 20' up to 2" wide. Drilled 6" for #8 fasteners on 1/2" and 3/4" and #10 on all other sizes.



Heavy Duty PVC Molding Sections

Largest Selection in the USA!



Not Shown Actual Size

1279 Rigid Rubrail

3" Wide, 1-13/16" profile, 20' long, White. Takes 1" stainless steel insert.

LIMITED QUANTITY!

\$237⁹⁰

20 ft length
List 408.21
BBP-1279RW20
Order# 171203

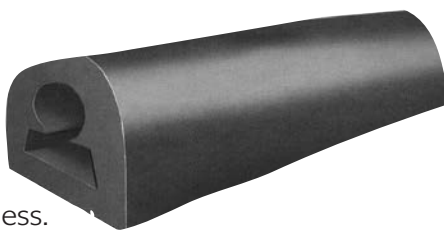


SPECIAL PURCHASE!

Commercial Bumper Black. Up to 60 ft lengths.

2-1/8" Base Width, 2" High 7/16" Wall Thickness.

\$77⁹ DAM-DB-50
FT Order# 107117



3-1/8" Base Width, 2-7/8" High 11/16" Wall Thickness.

\$12⁸⁷ DAM-DB-75
FT Order# 107128

Fan Nose Bumper Black. Up to 60 ft lengths.

2-1/2"W x 3" OD, 5/8" Wall Thickness

\$13⁹⁰ DAM-DB-503
FT Order# 148198



3-3/4"W x 4-1/2" OD 3/4" Wall Thickness

\$19⁷⁰ DAM-DB-504
FT Order# 147124

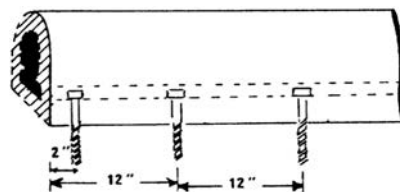
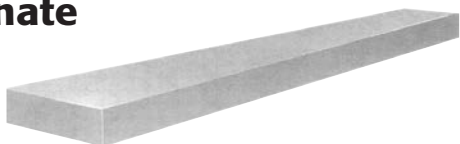
Push Plates

Black rubber with steel backing plate.



Part#	Order#	Size	SELL
DAM-DB-1409	149974	1/2" x 10" x 3'	260.92
DAM-DB-1410	107109	1/4" x 10" x 3'	218.85
DAM-DB-1509	729430	1/2" x 13-1/2" x 3'	339.06

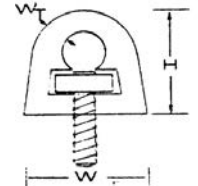
Polycarbonate Strips



Polycarbonate strip inserts here. Sold in lengths up to 10'

Not predrilled. Studs not included.

Part#	Order#	Base Width	Description	SELL
DAM-DB-50PC	107124	3/8" x 1" x 10'	Polycarbonate Strip for DB-50 Bumper	40.35
DAM-DB-75PC	137981	3/8" x 1-1/4" x 10'	Polycarbonate Strip for DB-75 Bumper	48.82
DAM-DB-100PC	137982	3/8" x 1-3/4" x 10'	Polycarbonate Strip for DB-100 Bumper	61.45



Corner installed.

90° Molded Insert Corners

Part#	Order#	Description	SELL
DAM-DB-51	107125	90° Molded Insert Corner for DB-50 Bumper	31.56
DAM-DB-76	107131	90° Molded Insert Corner for DB-75 Bumper	37.87
DAM-DB-103	107106	90° Molded Insert Corner for DB-100 Bumper	57.06

800-639-2715 hamiltonmarine.com

Typographical errors are unintentional and subject to correction.