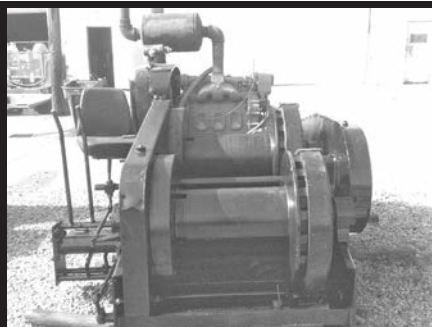


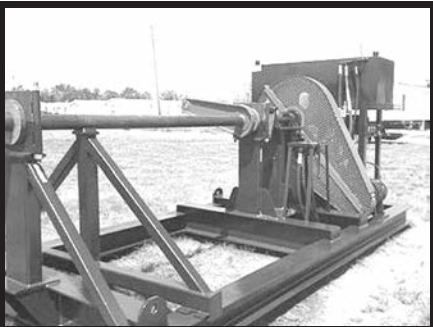
RAM Logistics and Machinery, Inc.

Phone: 985-384-1800

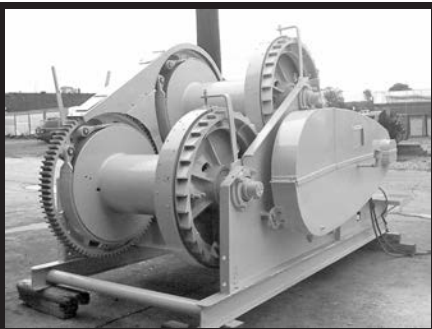
**Winches * Spooling Units * HPU's * Brake and Friction Services
Hydraulic Parts and Services**



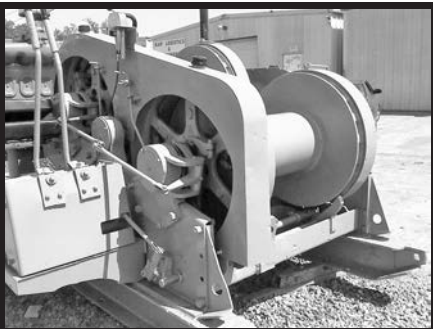
**CLYDE FRAME 5
ONE TRIPLE DRUM/ONE DOUBLE DRUM
AVAILABLE**



**NEW SELF CONTAINED SPOOLING UNIT
45 TON CAPACITY
JOHN DEERE POWERED**



**AMERICAN 120B TRIPLE OR DOUBLE DRUM
2 AVAILABLE - NEW FRAME, SHAFTS, & BEARING
PRICE: \$35,000.00 EA. - THREE WEEK DELIVERY**



**CLYDE FRAME 6, 7 AND 8
DOUBLE DRUM
AVAILABLE**

Sell * Rent * Lease * Buy

Onsite and Offsite Repair • Domestic and International

**SPUD WINCHES • TOWING WINCHES • ANCHOR WINCHES
MOORING WINCHES • 4 POINT MOORINGS • DECK WINCHES • CAPSTANS**

NAME BRANDS:

- AMERICAN • AMCON • CLYDE IRON WORKS • INTERCON
- SKAGIT • SMATCO • MARKEY • TIMBERLAND • NABRICO

BRAKE AND FRICTION SERVICES:

* Riveted Woven Linings * Replacement Bands * On-Site Re-Lining * OEM Replacements

RAM Logistics and Machinery, Inc. • RAM Hydraulics, LLC

9199 Hwy. 182 E • Morgan City, LA 70380

sales@ramlogisticsinc.com • www.ramlogisticsinc.com

**PERSONABLE, RELIABLE AND QUALIFIED SERVICES FOR
THE MACHINERY INDUSTRY**