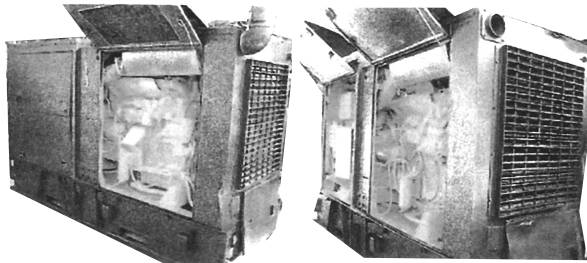


100 KW CATERPILLAR



Caterpillar 3306PC • 12 Lead Brushless

All Weather Housing, With 91 Gallon Fuel Tank, Caterpillar 3306C, 100 KW, 120 KVA Prime, 120 KW Standby, A5R3635-07, 49S03283, BHP 235, Block# 7N5456V-V2, Upgraded Wiring, New Panel: Amps, Volts, Hours, Frequency, Manual Start, New Temp Oil DC Volt Murphys, Reconditioned Turbo, Now 3 Phase, 120 / 208 or 240 / 416 / 480 Volts, Load Tested 420 Amps, 208 Volts

\$9,700.00

FOB: Camden, Michigan

60 KW GENERATOR SET Ex Military Surplus Model MEP-006A

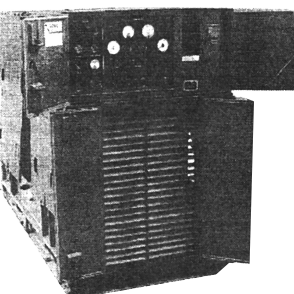


Powered By 6 Cylinder, Turbo Charged Allis Chalmers Diesel Engine, Built - In 30 Gallon Fuel Tank, 24 Volt Electric Start, Instrument Panel: AC Voltmeter, AC Ammeter, Volt-AMP-Phase Switch, Current Transformers, Frequency Meter, Oil Pressure Gauge, Water

Temperature Gauge, Battery Charging Indicator, Start - Stop Controls, 87" L x 36" W x 60" H, 4400 Lbs.

\$7,450.00 - FOB: Camden, Michigan

40 KW GENERATOR SET Ex Military Surplus Model DGW-40-63E



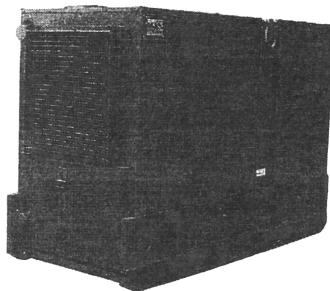
Powered By White Hercules D298 Diesel Eng., 1800 RPM, 24 Volt Electric Start, Base Mounted 30 Gallon Fuel Tank, Instrument Panel: Battery Charging Indicator, AC Voltmeter, AC Ammeter, Frequency Meter, Phase Selector Switch, Uljanik Static Exciter Provides 1-1/2% Voltage Regulation, Starter Switch, Stop Switch, Oil

Pressure By-Pass Switch, Water Temp. Gauge, Oil Pressure Gauge, Lube Oil Safety Shutdown, New Fuel, Oil and Air Filters, 80" L x 36" W x 55" H, 3200 Lbs.

\$6,250.00

FOB: Camden, Michigan

20 KW GENERATOR SET Ex Military Surplus Model MEP-004A-63E

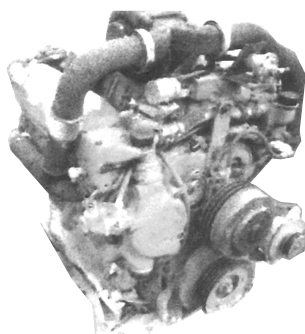


Powered By White Hercules, Model 198 White Engine, 1800 RPM, 24 Volt Electric Start, Dry Type Air Cleaner, Industrial muffler, 30 Gal. Fuel Tank, Military Instrument Panel, 78" L x 36" W x 41" H, 2600 Lbs.

\$5,250.00

FOB: Camden, Michigan

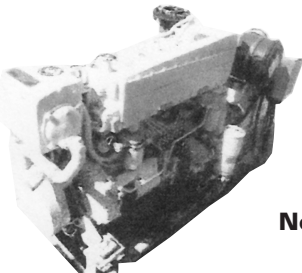
DETROIT DIESEL ENGINE 8V92T



**Used
92 Series
8 Cylinder
736 CU. In.
Displacement**

\$1,875.00 • FOB: Chicago

MARINE GENERATOR SETS



230 KW MARINE GENERATOR SET

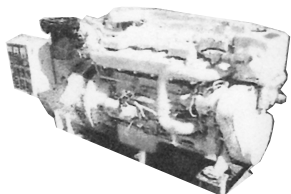
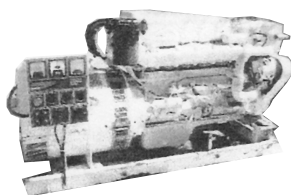
**Built By
Northern Lights Co.,
Seattle, WA**

Engine

- Komatsu Diesel Engine
- Model SA6D125-1

Generator

- Lima Electric Division Of Marathon Electric
- Part #3169-0959, Frame 680, Leads 12, Phase 3, RPM 1800, Hertz 60, NEMA, Insulation Class F, Duty Cont. Rise 80 C.



**Dimensions:
90" L x 44" W x 40" H**

\$17,850.00 Each - FOB: Camden, Michigan

MARINE GENERATOR SETS

75 KW

1800 RPM, Driven By 8V71 Engine.....**\$3150.00**

100 KW

1800 RPM, Driven By 6V71T Engine.....**\$3350.00**

150 KW

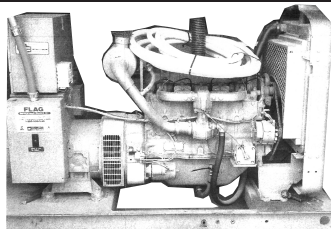
1200 RPM, Driven By Inline Detroit 6-71 Engine.....**\$3950.00**

All FOB: Camden, Michigan

NATURAL GAS / PROPANE GENERATORS

60 KW GENERATOR HERCULES

**Natural Gas / Propane
Model OB60H-GW63 • Serial No. G-4329**



480 Volts, 90 Amps, 3 Phase, 60 HZ, Engine Serial Number EL3334260G3400X361, Hours: 10.8, Color: Tan, No Enclosure, Instrument Panel: AC Voltmeter, AC Ammeter, AC Frequency Meter, DC Battery Charging, Circuit Breaker, Start Button.

\$4,750.00

FOB: Camden, Michigan

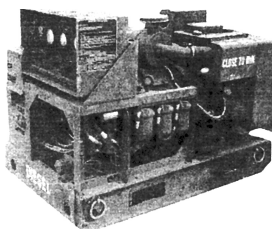
NATURAL GAS GENERATOR SETS

**70 KW Kohler With Ford V8 460 Cu. In.
Engine • 1225 Hours**

**80 KW Kohler With Ford V8 460 Cu. In.
Engine - 1115 Hours**

7 - 5 KW DIESEL GENERATOR SET

Ex Military Surplus Model MEP-002A



Powered By Onan-Cummins DJB Engine, 1800 RPM, 24 Volt Electric Start, Air Cleaner, Fuel Filter, Oil Filter, Stainless Steel Muffler, 5.5 Gal. Fuel Tank. 51" L x 32" W x 37" H - 950 Lbs.

\$2,750.00

FOB: Camden, Michigan

14 - 10 KW DIESEL GENERATOR SET

Ex Military Surplus Model MEP - 003A

Powered By Onan - Cummins DJC Engine, 1800 RPM, 24 Volt Electric Start, Air Cleaner, Fuel Filter, Oil Filter, Stainless Muffler, 10.5 Gal. Fuel Tank.

62" L x 32" W x 37" H - 1080 Lbs.

\$3,750.00

FOB: Camden, Michigan

Caterpillar D343 Diesel Generator

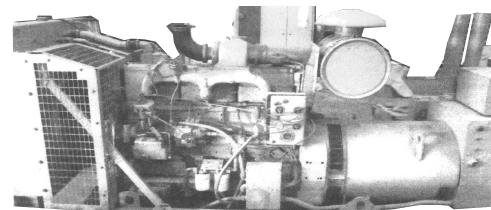


200 KW Continuous • 250 KW Intermittent

480 - 3 Phase, 60 Hz, reconnectable, 6 cylinder, radiator cooled, housed with complete instrument panel, muffler, base fuel tank, reconditioned, load bank tested.

\$12,750.00 - FOB: Camden, Michigan

CUMMINS GENERATOR SET 190 KW • 237.5 KVA

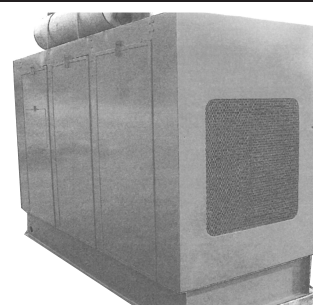


1800 RPM, 3 Phase, 60 Cycle, 120 / 208 Volts, 657 Amps, Model #MG-8209-50DFDR5052FFW, Serial #FH-90047-7/11-1, Cummins Engine NT855G3, 281 Hours

\$16,500.00

FOB: Camden, Michigan

175 KW GENERATOR SET With Cummins Diesel Engine NT-855C



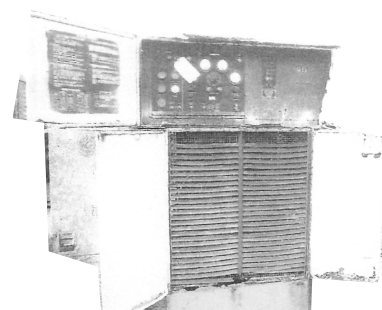
3 Phase, 60 HZ, 1800 RPM, 277 / 480 V, Complete Panel, With Fresh Sheet Metal Enclosure.

9-1/2 Ft. Long x 4 Ft. Wide x 9 Ft. High, 695 Hours

\$16,250.00

FOB: Camden, Michigan

(4) 200 KW Diesel Electric Generator Sets

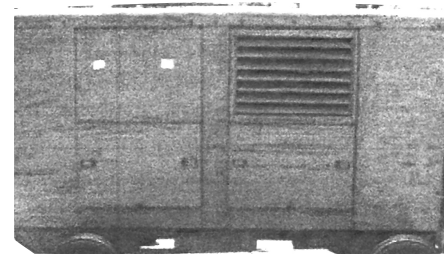


Model MEP-009B, Powered By Cummins NT-855G3, Full Instrument Panels, Radiator Cooled, Skid Mounted. 114" Long x 49" Wide, 9900 Lbs.

\$14,000.00 Each

FOB: Camden, Michigan

150 KW Cummins Generator Set



MB-15 Cummins 6 Cylinder Turbocharged, 891 Hours, 24 V Starter, Model NTC-6, Trailer Mounted, 8,000 Lbs.

120" L x 40" W + Wheels

\$12,500.00

FOB: Camden, Michigan

GROBAN

SUPPLY COMPANY, INCORPORATED

9300 SOUTH DREXEL • CHICAGO, ILLINOIS 60619 • 773-374-6900

GROBAN.MFG@ATT.NET
WWW.GROBAN.COM
FAX NO. 773-374-6909